

## Job Information Form

Job Opportunity:

Ag Manager

Business Name:

Mount Linton Station

Property Summary:

Mount Linton Station Limited (MLS) is one of New Zealand's largest privately-owned stations, comprising 12,145ha and renowned for its productive land and strong focus on sustainable farming.



Its success is built on the contributions of dedicated people, both current and past, and a commitment to genetic excellence. The station began recording its Angus herd in 1991, Romney flock in 1995, and more recently, Suftex sheep. Genetic improvements are evident in both sire performance and commercial livestock outcomes.

To meet the challenges of the Southland climate, MLS remains focused on breeding resilient, high-quality animals for sustainable production. The sheep and beef farming business is supported by an established cropping plan. There is a large team of 21 staff on farm, contributing to management, stock, ag, infrastructure right through to administration.

For more information on Mount Linton Station Limited please follow this link <https://www.mountlinton.co.nz/>

Position Overview:

As the Ag Manager of MLS, you will be responsible for both the agricultural and machinery divisions of the business. In addition, you will oversee infrastructure, including machinery, buildings, development projects, and other general on-farm requirements.

Each year, MLS completes 1,100 hectares of cropping, including 650ha of new grass and 500ha that is sown via aerial application.

Working alongside the General Manager, your role will develop and implement a strategic cropping and regressing plan. This will include budgeting and organising seed and fertiliser. You will also need to build strong relationships with agronomists and seed representatives, and coordinate with external contractors.

As the Ag Manager, you will lead a team of six direct reports: two tractor drivers, a digger operator, workshop manager, and two fencers. While your role carries significant management



responsibility, it also involves hands-on work with machinery and active participation in day-to-day operations, supporting and working alongside your team. You will also be responsible for coordinating with the digger operator and workshop manager.

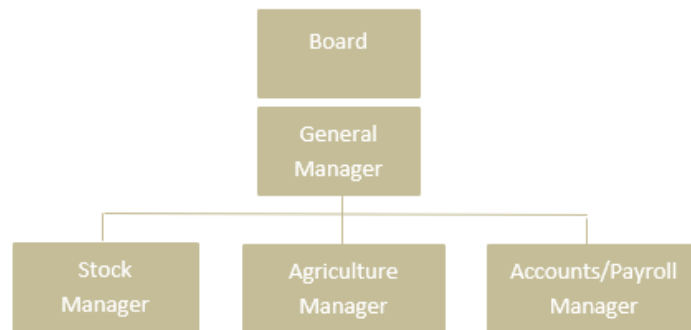
The two fencers generally manage their own schedules, working from a plan that covers both new and maintenance fencing. They report to you for oversight and to organise their gear requirements.

You will have regular meetings with the General Manager to review planning and budgeting for any CAPEX or development projects.

#### Skills, Experience, and Attributes Required:

- Strong knowledge of agronomy in agriculture, including cropping systems, fertiliser management and environmental compliance.
- Proven ability to build and maintain strong professional relationships.
- Strong tractor/machinery operation capabilities and a practical understanding of farming.
- Proven experience in managing development projects and financial budgeting.
- Demonstrated excellent leadership skills with the ability to manage and work collaboratively within a high-performing team.
- Highly organised with strong planning capabilities.
- Excellent communication skills and a high level of computer literacy.

#### Staff Structure:



#### Career Opportunities & Benefits:

- Be part of a large-scale farming operation, while taking ownership of your area and working collaboratively within a wider team.
- Work in an inclusive and supportive environment, with a high level of autonomy and responsibility.
- Join a farming business that values its people and fosters a positive, team-oriented culture.



- Build strong, lasting relationships with suppliers and contractors in a modern and progressive farming operation.
- Access and utilise up-to-date technologies and systems that support efficiency and innovation in the business.

**Partner Work Opportunities:**

There may be some part time work available on farm if required.

## Lifestyle Information

**Accommodation:**

A tidy, four-bedroom home is available, featuring an open-plan layout and a recently renovated kitchen with a heat pump. The property also includes a double garage.

**Farm Location & Community Information:**

The farm is centrally located to primary schooling, with a local rugby club and good hunting and fishing available on the station. Winton is a 30-minute drive, and it's a 1-hour drive to Invercargill. Access to some of Southland's best fishing, surfing and swimming beaches is a 30-minute drive.

**Schooling:**

There is a local primary school up to year 8, with a school bus at the gate. There is a high school bus to Central Southland College in Winton and there are Boarding options in Invercargill for high schooling.

## Farm Information

**Farm Area (total/effective):**

12,145ha total area / 11,020 productive farm area. MLS is one contiguous block with 5 block managers, managing 5 units. As well as this Ag Manager role there is also a Stock Manager. 1125ha in forestry; a mix of plantation and native bush.

MLS is run as a free range, sustainable, sheep, beef and forestry farming operation with fenced off waterways, areas of native bush and shelter belts.

**Contour:**

MLS is between 200 – 600 metres above sea level. There are approx. 3600h developed flats on the Downs with developed hill and more extensive hill between 400 – 600 metres.

**Soil Type:**

Mix – Predominately Sedimentary.

**Rainfall:**

Average annual rainfall 1150mls.

**Subdivision/Fences:**

Excellent fit for purpose fencing.

**Woolshed & Other Buildings:**

Woolsheds, and a range of sheep and cattle yards, throughout the property.



Water:	Very well maintained and fenced off waterways. Currently investing in a reticulated water scheme in the hills.
Machinery:	<p>Full range of well-maintained plant and machinery, including tractors and agriculture cultivation equipment (excluding baleage and silage). Full workshop on site:</p> <ul style="list-style-type: none"> <li>• Direct drills and air seeders.</li> <li>• 4 JD modern tractors, computer operated with GPS.</li> <li>• Full complement of cultivation gear.</li> </ul> <p>Of the 1100ha of cropping, 500ha is sown with plane/helicopter on the hill blocks, this is both crop and re-grassing.</p>
Tracks:	Well-laned property with good access throughout.

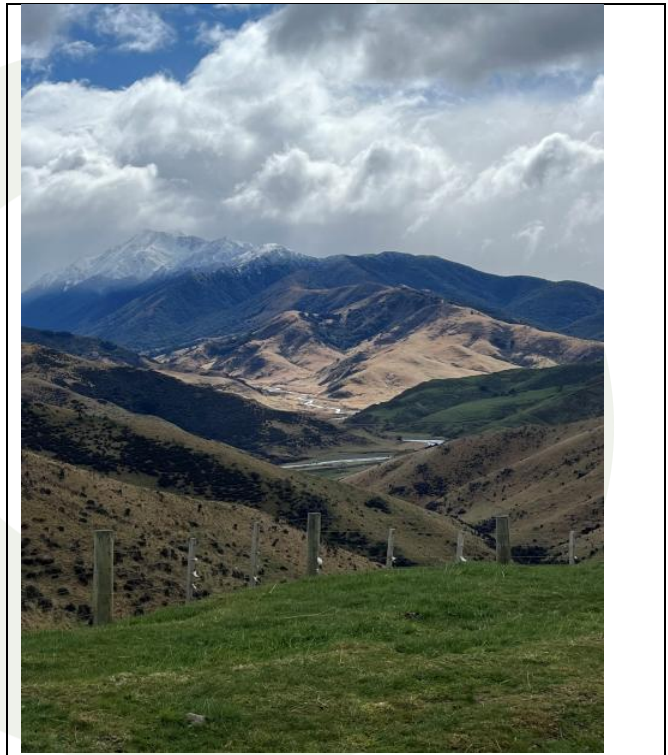
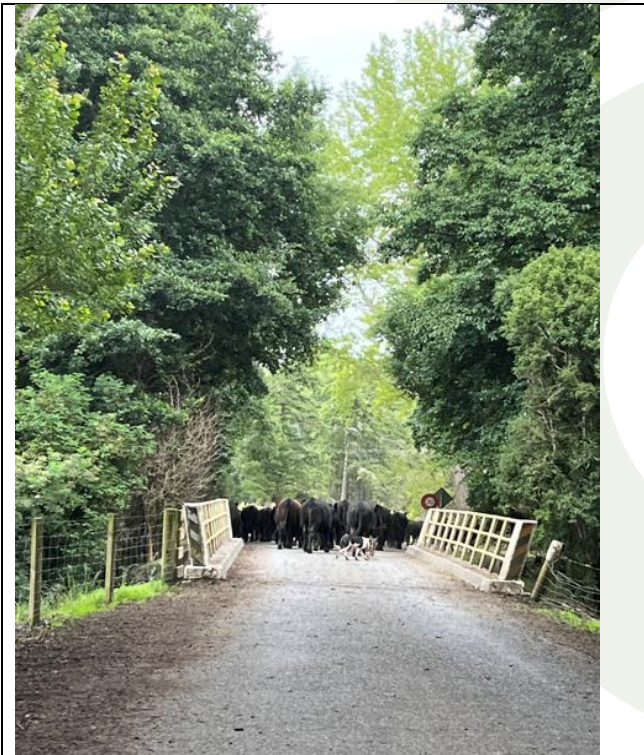
## Farm Policy & Systems

Production System	<p>MLS runs a breeding, finishing and stud stock operation with the aim to finish all stock produced at acceptable weights prior to the onset of winter.</p> <p>MLS have a cattle and sheep genetics stud for their own stock replacements, and the future strategy of the station is to continue with the further commercialisation of this part of the business.</p> <p>Information on breeds (Angus, Romney and Suftex) can be found on MLS's website.</p>
Stock Policy - Breeds/Number:	<p>Wintering Numbers:</p> <ul style="list-style-type: none"> <li>• Cattle 5,160 - 5,670 head</li> <li>• Sheep 53,900 – 58,000 head</li> </ul>
Cropping Policy:	<p>1100ha of crop, swedes and kale.</p> <p>650ha of new grass each year.</p>

## Photos







## Map

