

## Job Information Form

Job Opportunity:	Farm Manager – Springvale Station
Business Name:	Rimanui Farms Limited – Springvale Station
Region:	Taihape, Rangitikei District
Reports To:	Business Manager
Business Summary:	<p>Rimanui Farms Limited is a largescale farming business operating sheep and beef cattle farms across the North Island and a cluster of dairy farms and support land in the South Island. The farms have been extensively developed and are managed by a team of high performing Farm Managers.</p> 
Property Summary:	<p>The groups business strategy has four areas of focus across the portfolio of farms:</p> <ul style="list-style-type: none"><li>• Supporting farm staff to realise their potential.</li><li>• Managing the farms to maximise their financial performance.</li><li>• Protecting the environment.</li><li>• Developing farms to realise their potential.</li></ul> <p>Rimanui Farms Limited has the necessary resources and stakeholder support to achieve these objectives.</p> <p>Springvale Station is a standout 2,800ha hill country property with scale, performance, and potential. Set against the stunning backdrop of the Rangitikei River northeast of Taihape, this is a well-developed breeding and finishing operation wintering an impressive 30,000su's.</p> <p>The farming business runs 14,000 ewes, 4,500 hoggets, and 1,000 Angus cows, a serious livestock enterprise offering real scope for continued growth and innovation.</p>
Position Overview:	<p>After 30 years at the helm, Springvale Station's highly respected Farm Manager is moving on. He leaves behind a remarkable legacy of land stewardship, sustainable practices, and consistent profitability. Over the years, he has built a strong, capable team and mentored many within the industry. This marks a rare and exciting opportunity with the position of Farm Manager at Springvale Station now open to the market.</p>



We're looking for a new Farm Manager to lead Springvale Station into its next chapter with someone who brings strong leadership, practical know-how, and a genuine sense of pride in the land.

The Farm Manager will work with the Business Manager to develop and implement farm physical and financial plans.

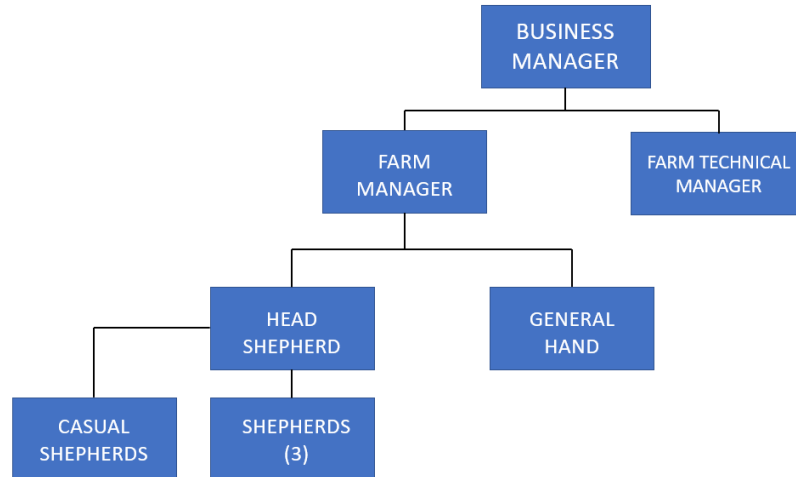
They are responsible for managing the day-to-day farm operations to maximise sustainable farm returns within relevant laws/regulations and for leading the farm staff and fostering a positive and effective workplace culture.

To be successful in this Farm Manager role you will be required to:

- Drive health and safety excellence through compliance, planning, risk assessment, staff induction, training, and effective communication.
- Oversee and implement animal health, grazing, feed, fertiliser, and genetics plans to ensure optimal livestock and pasture performance.
- Have a strong understanding of farm infrastructure and equipment, with the ability to develop, delegate, and implement maintenance and improvement plans.
- Identify and plan farm development projects, with a focus on effective asset management and long-term infrastructure quality.
- Be financially competent in budgeting, forecasting, expenditure control, stock policy gross margin analysis, benchmarking and using performance data to drive decisions. Buying and selling is undertaken to achieve best advantage.
- Build a high-performance, positive workplace culture, manages staffing and stakeholders, and enhances the farm's reputation as a preferred employer.
- Maintains accurate farm data, uses FARMAX for decision-making, prepares high-quality monthly reports, and confidently presents farm performance to management and the board.



## Organisational Structure:



### External:

Contractors, suppliers, veterinarians, stock agents, local farming community.

### Internal:

Business Manager. Farm staff, Rimanui Farms Leadership team, casuals.

## Skills, Experience, and Attributes Required:

- 10 or more years' experience in livestock roles at large scale (shepherd, head shepherd, stock manager).
- 5 or more years' experience in farm manager positions.
- Relevant bachelor's degree (preferred) and/or completion of relevant Primary ITO courses up to and including level 5.
- FARMAX Red Meat bronze accreditation or higher (preferred).
- Animal welfare focused and a team of 5 working dogs.
- Positive, motivated, and personal growth oriented.
- Hardworking, punctual, and physically capable.
- Takes pride in high-quality, tidy work.
- Accurate, organised, and follows instructions.
- Strong communicator and work well within a corporate structure.
- Proactive and uses initiative.
- Effective planner and record-keeper.
- Comfortable with challenges and new ideas.
- Energetic, progressive and technically competent.
- Accomplished leader and passionate about industry leadership.

## Career Opportunities & Benefits:

- Opportunity to take ownership of a largescale sheep and beef property.
- Work within a proven and successful business structure.
- Managing within a multi-farm and corporate farming environment with great systems and people to support you.



- A modern farming business that has close relationships with suppliers and rural professionals.
- Modern technologies and systems utilised within the business.
- A property with very good infrastructure that still has the opportunity for the appointee to be involved in further development.
- Excellent local community and a great location for hunting, skiing and a range of other recreational pursuits.

Partner Work Opportunities: Casual work may be available at Springvale or one of the other Rimanui Farm stations.

## Lifestyle Information

Accommodation: Accommodation is an attractive open plan 3-bedroom family home and an office on a split level, with large kitchen dining area and a separate lounge area. It is a spacious home with free standing fire, double garage and shedding. The garden has been well cared for over the years. The home is Healthy Home Certified.

Farm Location & Community Information: Springvale Station is based in the Moawhango district in Taihape. There is a strong rural community with plenty of social happenings at the local hall.

There is hunting and fishing locally and ski fields only 45 minutes away. It is a 30-minute drive to Taihape and 1 hour 30 minutes to Hastings, with Whanganui, Palmerston North, Napier and Taupo all within a 2-hour drive.

Schooling: A school bus is available at the farm gate to the local Primary School at Moawhango. There is an Area High School in Taihape.

Feilding Ag High School has a bus that goes down on Sunday evening and then back to Taihape on Friday afternoons.

There are a range of other boarding options throughout Manawatu, Hawke's Bay, and Whanganui.

## Farm Information

Farm Area (total/effective): 3,000ha / 2,800ha effective.

Contour: Contour ranges from productive, cultivable flats through to easy rolling hill country with some more extensive steeper hill areas.

Soil Type: Volcanic Ash soil.



	Optimum soil, test results and require maintenance fertiliser application.
Rainfall:	Averaging 900mls per annum.
Subdivision/Fences:	Traditional conventional fencing with lead outs for electrics when break feeding stock on crops. 10-15ha paddocks on the easy country and on the steeper country, paddock sizes are 30-50ha.
Woolshed & Other Buildings:	At the front of the station there is a 6-stand woolshed with covered yards and night pen capacity of 3000 ewes. Numerous good sets of satellite sheep yards scattered throughout the station - all yards are well placed for ease of stock movement. Large set of cattle yards at the woolshed and with a satellite set of cattle yards halfway out the back. There is a workshop on farm and bikes are serviced on site or next door at Erewhon Station.
Weeds:	Clean farm. Some Porina and grass grub, however there is a management plan in place for this.
Water:	There is a main's powered reticulated water scheme at the front of the station, and a solar pump system situated at the top of the station. They are looking reticulate more of the station over the next few years.
Machinery:	Shepherds use quads and senior staff have side by sides. The station owns the required machinery for its needs, maintained to high standard. Contractors are brought in for supplement harvest and crop establishment work.
Tracks:	The property has a well-established road from the front to the back of the station, that you can drive a car on. Access throughout the Station is very good.

## Farm Policy & Systems

Production System:	Semi Intensive.
Stock Policy – Breeds/Number:	30,000 stock units. 13,000 MA ewes. 4,000 hoggets – 50%-70% mated.  1000 in calf cows. 240 replacement heifers, calve as R2's.



Maternal/Terminal Policy:

Maternal – Romney x Highlander.  
Terminal – Multiplier Terminal Flock (internally supplied).

Sheep – Mating/  
Lambing/Weaning Dates:

Ram out on 23<sup>rd</sup> April for the MA ewes and early May for the Hoggets.  
Lambing mid-September through to mid-October.  
Wean the majority early new year.  
Try and finish around 55% of the progeny season dependent or sell store. A component of the store lambs are finished on another property in the Hawke's Bay belonging to the group.  
Keep 4000 replacement ewe lambs.

Cows – Mating/  
Calving/Weaning Dates:

Bull out - January for the MA cows and late December for the heifers.  
Calving - MA cows, early November, heifers early October.  
Wean – March.  
Surplus heifers sold store or finished if season allows.  
Steers they aim to finish or sell store depending on the season and markets.

Animal Health Practices:

Animal Health Plan in conjunction with the Vet. Best practice always.

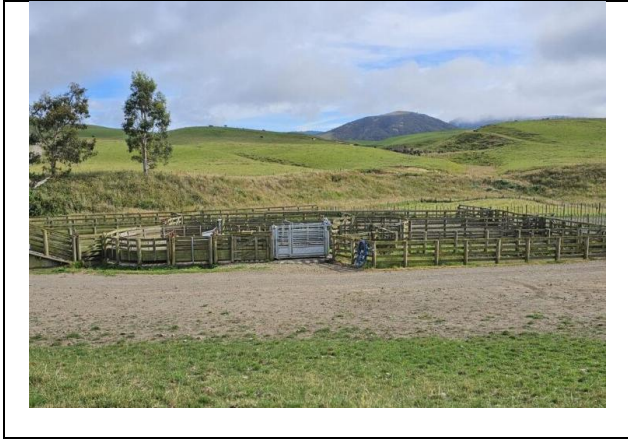
Cropping Policy:

45ha summer crops – Raphno, graze summer through to winter.  
130ha Winter Kale and Swedes.  
Contractors carry out ground preparation and crop establishment work.  
1<sup>st</sup> year crop - spray and direct drill.  
2<sup>nd</sup> year crop, then cultivate.

## Photos











## Map

