

Job Information

Job Opportunity:

Dairy Assistants x 2

Business Name:

Tuaropaki Trust

Property Summary:

Tuaropaki Trust is an exciting Maori Land organisation with an asset base of over \$1 billion. The Trust was formed by 297 families amalgamating their land in the 1950's, at Mokai, 30km North-West of Taupo.



The Trust was an early developer of geothermal power and now has a diverse portfolio including a geothermal power station, hydrogen energy production, engineering and drilling services, native plant nursery, sustainability centre, as well as dairy, beef and sheep farming. At the core of this organisation is a desire to drive prosperity for their owners and their families, so there is a strong focus on whanau, the future and sustainability.

Dairy farming is a core activity of the Tuaropaki Trust and the dairy operation spans across 620 ha. The Trust also operates a sheep/beef farm that supports the dairy unit with winter grazing and young stock, along with a worm farm, native plant nursery and honey production as part of its rural operations.

Each arm of the business interacts in some form with the other to assist in the goal of "sustainable practices".

Position Overview:

The Dairy Assistants will work closely with the Production Leads and Senior Dairy Assistants offering you a variety of tasks to support the daily operations across the Rotary and Herringbone dairy sites.

You'll play an essential role in maintaining high standards in animal welfare, milk quality, and farm upkeep. This is an excellent opportunity for someone who's passionate about the dairy industry and eager to grow their career in farming.

We're looking for two Dairy Assistants to join the two sheds and although the teams run independently there is the expectation that you'll milk across both sheds.

Key Responsibilities:

- Perform milking duties with a strong emphasis on milk quality.

Skills, Experience, and Attributes Required:

- Support animal health programmes and uphold animal welfare standards.
- Contribute proactively to the Health & Safety programme.
- Carry out general farm equipment and property maintenance.
- Assist with stock management and animal husbandry.
- Operate farm vehicles (side-by-side and 2-wheeler bikes).
- Maintain accurate records for animal health and milk quality.

Staff Structure:

- Ideally 2-3 years dairy experience.
- A strong work ethic and positive attitude.
- Motivation to work independently and collaboratively.
- Good communication and basic computer literacy.
- Resilience and the willingness to learn.
- Sound stock handling skills and comfort with early starts.
- A genuine interest in building a career in the dairy industry.

Herringbone shed:

3 staff, milk between 450-460 cows.

Production lead, senior dairy assistant, assistant.

Rotary shed:

6 staff, milk 1350 cows.

Senior production lead, senior dairy assistant, 3 dairy assistants

Career Opportunities & Benefits:

- Professional career development encouraged and supported.
- 5% Kiwisaver contribution.
- Subsidised power.
- Southern Cross Health Insurance.
- All PPE and work gear provided.

Partner Work Opportunities:

Taupo is an easy 20-minute drive where there are plenty of work opportunities. There will be farming work opportunities in the surrounding district.

Lifestyle Information

Accommodation:

Two separate houses available for Dairy Assistants:

- First house is a tidy 3-bedroom brick semi-attached house. It is 15 years old with lovely views. There is a fireplace and heat pump.
- Second house is slightly older, 4 bedrooms, fully insulated with a cosy fire.

Both homes meet healthy homes standards.

Farm Location & Community Information:

30km Northwest of Taupo.

There is an excellent community with plenty of recreational activities within a 20-minute drive such as fishing, hunting, skiing, mountain biking. If you enjoy outdoor activities – you cannot beat the location.

Schooling:

Tirohanga Primary School is a 5-minute drive away.

There are buses on Pohipi Road to Primary Schools and High Schools in Taupo.

There is also an early childcare centre (1–4-year-olds) within a 2-minute drive from the available house.

Farm Information**Farm Area (total/effective):**

620 ha effective dairy grazing platform.

Contour:

Rolling to flat.

Soil Type:

Pumice and volcanic.

Rainfall:

1250-1400ml per year.

Subdivision/Fences:

Mix of conventional and electric fences. Paddocks are broken up with electrics for grazing. General the farm infrastructure is good.

Shed Size & Type:

60 bale rotary and 40 aside herringbone.

**Plant & Brand:
(Cup removers, bails, in-shed feeding)**

In-shed feeding, automatic cup removers and also auto drafting system, very well automated systems.

Shed Wash:

Automated.

Machinery:

Side by side and/or two-wheel motorbike, will also drive tractor in time.

Calf Rearing Facilities:

Have a separate calf rearing operation, so this function does not form part of Dairy Assistant role. 3 large calf sheds/implement sheds. Plus 5 tunnel calf sheds.

Keep and rear all the calves.

Other Buildings on Farm:

There is one large implement shed and two large hay sheds.

Water:

The farms are fully reticulated.

Farm Policy & Systems

Production System

Semi Intensive – system 4.

Cows - Breeds/Number:

There are two mobs of cows:

- 450-460 cows .
- 1350 cows.
- Calving starts around 29th July.

Young Stock Policy:

450 of replacement heifer calves are reared on the dairy farm, 900 of the beef calves are reared on a specialised calf rearing unit.

As weaners they go over to the drystock station and graze there until R2's and come back in calf just before calving.

An Angus bull goes out with the R2's while on the drystock station, then they go back to the Dairy unit to calve.

Winter Policy:

Once dried off 1600 cows are winter on the drystock station next door to the dairy operation, the rest are winter grazed on the dairy unit.

Feeding Systems:

Spring calving operation only.

Grass based with 20% of feed brought in.

There is automative inshed feeding.

Animal Health Practices:

Best practice, animal health, work with the vets for any issues.

Must understand mastitis, lame cows and any other cow issues.

Roster Systems:

Spring, operate 6 and 2.

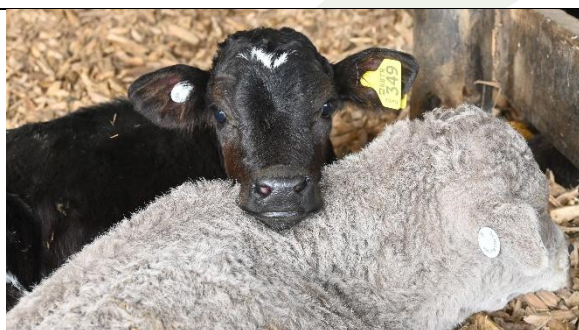
From October, once mating finished, 6/2, 6/3.

Production – kgMS per cow:

Budgeted production is 410 per cow.

Photos







Map

