

## Job Information Form

Job Opportunity:

Station Manager

Business Name:

Joan Fernie Charitable Trust - Moeangiagi Station

Business Summary:

Joan Fernie Charitable Trust (JFCT) consists of three large stations in Hawke's Bay with a proportion of profits being distributed to various deserving organisations throughout New Zealand.



The Stations are:

- Moeangiagi Station – Putorino – 3,609Ha
- Mangatapiri Station – Elsthorpe – 3,520Ha
- Chesterhope Station – Hastings – 562Ha

JFCT is governed by a progressive board whose members are striving for top financial, livestock and land management performance. Alongside supporting charitable organisations across New Zealand, the board strives to foster and develop the talent across New Zealand's sheep and beef industry. They will do this by proving to be an aspirational workplace for young Shepherds, Generals and Managers to work and grow.

Recently, the JFCT board was approached by the trustees of the Waipaoa Cadet Training Farm, which has operated in the Gisborne district for over 17 years, producing many well-trained and 'farm-ready' young farmers. Due to a change of circumstances, JFCT has established the Moeangiagi Station Cadet Training Trust (MSCTT) at Moeangiagi Station.

This partnership honours the legacy of Joan Fernie and the Waipaoa Cadet farm, with graduates set to become future leaders in New Zealand's farming industry, an industry in which the Fernie family built their farming legacy. Governance of the Moeangiagi Station Cadet Training Farm will sit with MSCTT.

Property Summary:

Moeangiagi Station is a 3609Ha property comprising rolling to medium hill country with some very steep areas. Located 60km's north of Napier on Waikare Road, Putorino, the property has coastal views north to Mahia and south to Napier.

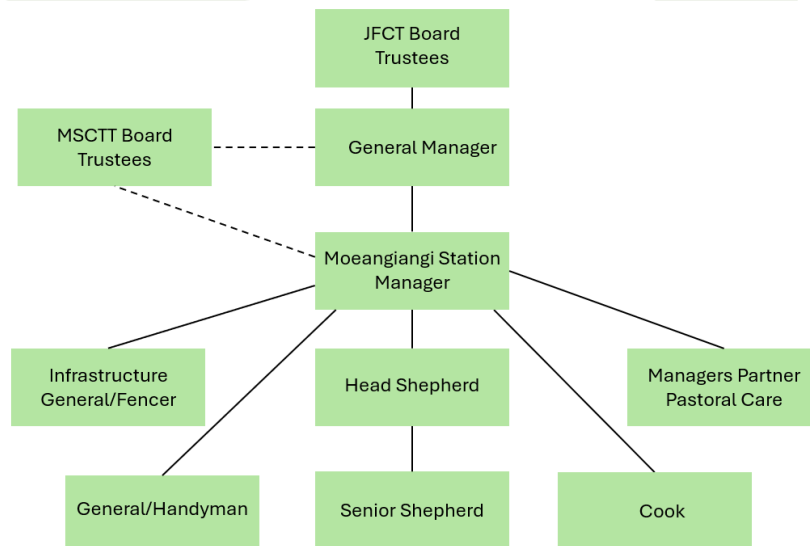


Operating as a commercial farming business, Moeangiagi Station runs a sheep and beef breeding and finishing policy with the utilisation of forage crops.

The collaboration between JFCT and MSCCT is founded on “Continuing a Legacy of Excellence in Agriculture”. January 2027 will be the first intake of 5 Cadets, with new intakes annually seeing 10 Cadets on farm from the 2028 intake.

As the property transitions in preparation for the first intake of Cadets in 2027, the JFCT has made a significant investment in purpose-built Cadet facilities and other high quality dwellings, including 3 new staff houses and a complete renovation of the outstanding Station Manager’s house. There are several other ongoing infrastructure upgrades in the pipeline across the property.

#### Organisational Structure:



#### Position Overview:

The Station Manager is responsible for the implementation of the agreed farm business plan and sustainable operation of Moeangiagi Station. The key objective is to maximise business profitability with the emphasis on stock performance and farm productivity of Moeangiagi Station.

With a direct reporting line through to the General Manager of JFCT, this role also has accountability by way of a dotted line to the MSCCT board, as the practical training aspects of the cadetship will be delivered on by the Manager and staff on farm.

Whilst the primary focus and responsibilities of the Station Manager is focussed around Moeangiagi Station, a collaborative and wider farming lens will be required at times. This is to allow for utilising the scale and diversification of land JFCT owns and manages. This may include the timing of

livestock sales between each of the three stations and balancing store versus forward livestock decisions.

As well as delivering on the Business Plan, the role also encompasses maintenance and continued improvement of farm infrastructure, plant condition and the management of people resources. Building the team and culture in preparation for the 2027 Cadet intake will be a key priority while at the same time building a positive marketplace perception of the business. Ideally, this will be a couple's role as there is a remunerated role available to support the Cadet training aspects of the business.

The intention is to bring in an external tertiary provider to deliver the curriculum, however the practical training aspects will be delivered on by the Station Manager and staff on farm.

The appointee to this role will be a practical person with a proven track record of business planning and financial management, people management, stock and operational management, asset management, health and safety, and compliance/risk management.

#### Relationships:

Internal: Board Members, General Manager farming, Group Farm/Station Managers, Staff and Cadets.

External: Suppliers, Buyers (including Meat Company's), Agents, Contractors, neighbours, Service providers, Rural Professionals, Farm Groups, Tertiary Providers, Cadet's families and others as required.

#### Skills, Experience, and Attributes Required:

- Confident financial capability, including budgeting, cashflow monitoring, and accurate monthly reporting.
- Proven farm management experience across livestock, pasture, and day-to-day operational planning.
- Pasture management, feed management and stock rotation knowledge and skills.
- Strong leadership skills with experience managing, mentoring, coaching and developing farm teams and Cadets.
- Knowledge of farm management software is desirable (FarmIQ, Farmax, Farm Focus / Xero and Figured) and being confident interpreting data.
- Excellent communicator able to work positively with staff, contractors, suppliers, and Board members.
- Open, honest with a high level of personal integrity.
- Highly organised and proactive, able to manage multiple priorities and keep farm operations running smoothly.
- Solid understanding of H&S requirements, with the ability to lead safe practices on-farm.
- Knowledge of environmental compliance and commitment to sustainable, best-practice farming.

### Career Opportunities & Benefits:

- Strong problem-solving ability, with a practical, solutions-focused approach.
- Positive, reliable, and team-orientated, with a can-do attitude and high level of professionalism.
- Genuine interest in passing on knowledge and ensuring that young people reach their potential.
- Lead by example and behave in a way consistent with JFCT's and MSCCT's values and policies.
- Experienced horse and dog person, with a capable team of 5+ working dogs.
- Full New Zealand Driver's Licence, and current New Zealand Firearms Licence and First Aid Certificate.
- An outstanding Station Manager role on a largescale station with a real point of difference.
- Highly supportive board and leadership team there to support you.
- The property has come a long way in a short time with significant infrastructure.
- Be the inaugural manager by attaching your brand to a new industry entity with huge exposure.
- Be the face of Moeangi Station and lead the Cadet brand.
- Play a pivotal role in building on the current team with roles specific to supporting the Cadets.
- Join a farming business that still has gains to make in productivity, production and profitability.
- Highly desirable farming area with an amazing mix of contours and strong country.
- Excellent local community and a coastal property with amazing recreational opportunities (on farm access to hunting).
- Benefits include a work vehicle, tools of the trade, professional development, and other standard benefits relevant to a Station Manager role.

### Partner Work Opportunities:

This will include pastoral care and providing support with event organisation.

## Lifestyle Information

### Accommodation:

An outstanding fully renovated homestead is provided with this role. It is open plan with a separate office, new bathrooms, ducted heat pump system and a free-standing fireplace with wet back.  
There is a garage and free-standing carport under cover near to the house.  
The garden is very tidy, well-established and low maintenance.

### Farm Location & Community Information:

The farm is located 60km's North of Napier on Waikare Road, Putorino.  
The Waikare and Districts Sports Centre provides an excellent venue for many different sporting and community activities.

**Schooling:** Putorino Primary School is just 4km's from the Station and caters from Year 1 - 8.  
High Schooling options would be boarding in either Napier, Hastings or Havelock North.  
There is a very good Kindergarten in Tutira, 15 minutes south of Putorino.

## Farm Information

**Farm Area:** 3609Ha total land area.

**Contour:** Rolling to medium with some very steep country.

**Rainfall:** 1100mls annually.

**Subdivision/Fences:** Paddocks are of varying sizes. There are some extensive paddocks with technology being considered for subdivision and feed utilisation.

**Woolshed & Other Buildings:** 8 stand woolshed.  
New workshop and sheds.  
Numerous satellite yards across the station.  
3 brand new staff houses under construction.  
Purpose built cadet hostel with living quarters, a classroom and full amenities.

**Water:** A fully reticulated water system is currently under design.

**Pests:** Feral goats and geese.

**Machinery:** A fully resourced operation with high quality and well-maintained machinery.

**Tracks:** The station is well tracked for ease of access.

## Farm Policy & Systems

**Production System:** Sheep and cattle breeding and finishing operation.

**Stock Policy:** Moeangiangi Station has the following stock going into winter:

**Cattle:**

- 1000 in-calf Angus cows
- 331 R1 replacements
- 311 R2 heifers
- 443 R2 steers – finished
- 470 R1 steers – finished
- Angus breeding bulls



**Sheep:**

- 10,000 in-lamb ewes (Romdale transitioning to full Romney)
- 3,500 replacement hoggets
- Trade lambs season dependent

**Animal Health Practices:**

Animal health plan reviewed annually with Vet.

**Cropping Policy:**

Winter forage crops utilised and summer crops are season dependent.

**Photos**



## Map

